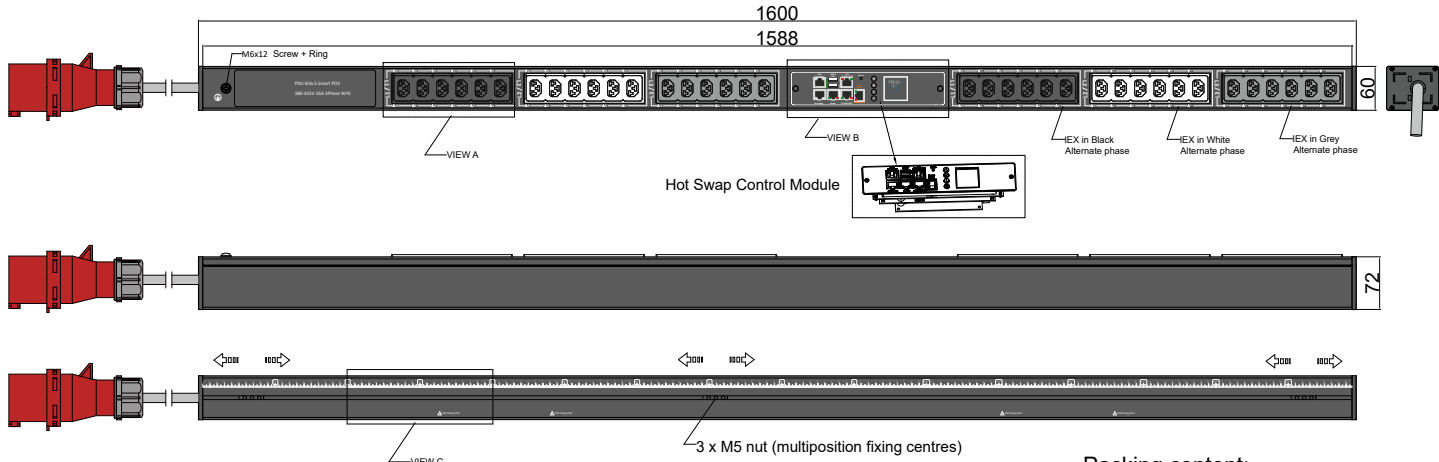
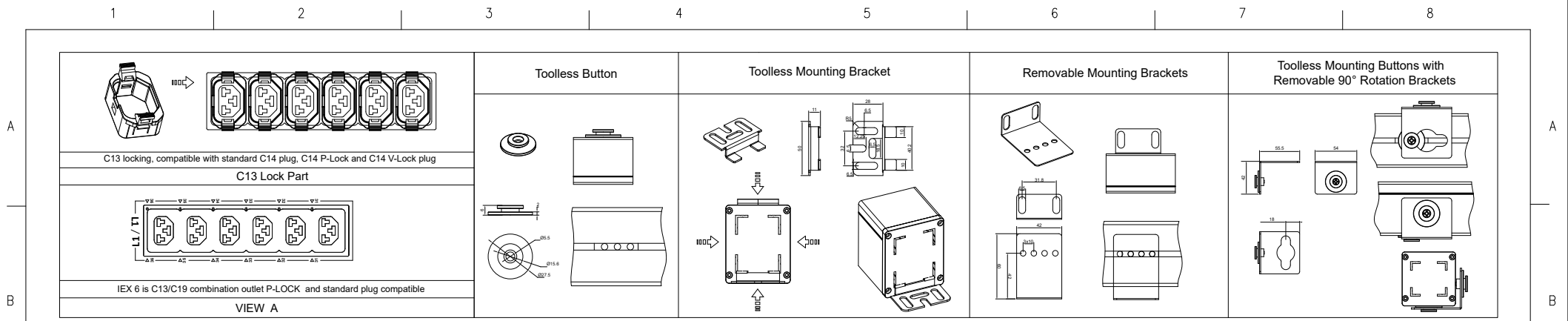
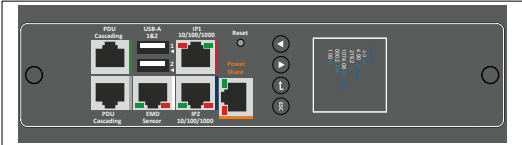


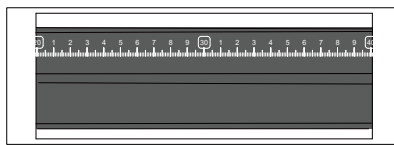
FEATURES	
Technology	POS (Per Outlet Switching)
Energy Metering	Voltage(V), Current(A), Active Power(W), Apparent Power (VA), Reactive Power (var), PF, Frequency(Hz), kWh
Metering per Input Line	Yes (Branch Circuit and Total Current) Accuracy 1%
Metering per Output Receptacle	No
Remote Outlet Switching	Yes
Ethernet Port	2 Gigabit Ethernet ports to access the PDU from 2 different networks
Networking Protocols	DHCP, IPv4 and IPv6, DNS, http / https, SSHv.2, SNMP v1 / v2c / v3, SNMP TRAPS / SETS / GETS, SMTP, Modbus , TCP, RADIUS, Syslog, TLS 1.3, SNTP, ARP, ICMP, ICMPv6, UDP, NDP
PDU Cascading	16 PDUs
Power Share	Yes
Network Controller	Replaceable Hot Swapable controller with 4 button OLED display
Residual Current Monitoring	No
Rack Access Control	Compatible with DCIM solutions
USB Ports	2 USB A ports WiFi networking, webcam, PDU configuration and mobile interface
Environmental Sensors	All in one Temperature and Humidity sensor with 2 digital inputs (for connect air flow, door sensor, water leak, smoke detector and Vibration sensor) plug and play bus allows to connect 8 EMD devices in one PDU
INPUT	
Plug	IEC60309 3P+N+E 6h 16A 380-415V
Lead Length	3 meter
Cable Type	H07RN-F5G2.5 mm ²
Max. Input Load	16A
Rated Input Voltage	380-415V three phase
Frequency	50-60Hz
Power Capacity	11kW
OUTPUT	
Rated Output Voltage	190-250V Single phase
Output Types	36 IEX (C13/C19) combo with LED (Max rate 16A) EN61984+UL498 certified
Overload Protection	None
CHASSIS	
Dimensions (W x D x H)	1600 x 60 x 72 mm
Color	RAL 9004 black powder coat
Mounting Options	4 mounting options (see page 2)
Required Torque for Mounting Screws	≥2.54N·m (25.9kgf·cm or 22.4 in·lbs)
OPERATING ENVIRONMENT	
Temperature Range	0° to 60° C (30° to 140° F)
Humidity	0 - 95 %
Elevation	0 - 4000 Meters
CONFORMANCE	
IEC 62368-1 (Third Edition)	



VIEW B:



VIEW C:


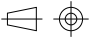



Chassis Color	Code
Black	Standard color
White	W
Red	R
Blue	A
Green	G
Orange	O
Grey	GY
Yellow	Y

Packing content:

IEX Lock-VP  X36 (black,white,grey)

<p>POS Series</p> <p>Inlet Power Monitoring</p> <p>Per Outlet Switching</p> <p>Environmental Monitoring</p>	<p>OUTPUT</p> <p>(12) IEX (C13/C19) combo with LED Black (Max rate 16A)</p> <p>(12) IEX (C13/C19) combo with LED White (Max rate 16A)</p> <p>(12) IEX (C13/C19) combo with LED Grey (Max rate 16A)</p>	<p>OPERATING TEMPERATURE</p> <p>0° to 60°C</p>	<p>Revisions</p> <table border="1"> <thead> <tr> <th>Rev</th> <th>Description</th> <th>Date</th> </tr> </thead> <tbody> <tr> <td> </td> <td> </td> <td> </td> </tr> </tbody> </table>			Rev	Description	Date			
						Rev	Description	Date			
<p>INPUT</p> <p>380-415VAC 16A 50HZ</p> <p>IEC60309 16A 3P+N+E Plug</p> <p>3m H07RN-F5G2.5mm² Power Lead</p>	<p>BRANCH CIRCUITS</p>	<p>MOUNTING ACESORIES</p> <p>(2) Toolless Button</p> <p>(2) Toolless Mounting Bracket</p> <p>(2) Removable Mounting Brackets</p> <p>(2) Toolless Mounting Buttons with Removable 90° Rotation Brackets</p>									

<p>DRAWING TYPE</p> <p></p> <p>(NO PERMISSION,NO CHANGING)</p>	<p>IEXPOS503616A3PV</p>	
<p>unit=mm</p>	<p>Housing</p>	<p>Aluminium</p>
<p>TECHNICAL STANDARD</p> <p>IT11;</p> <p>NO RUST</p> <p>NO FLAW ON THE SURFACE</p>		<p>Black Powder Coating</p>
<p>FILLET R0.5</p> <p>ANGLE ±0.5°</p> <p>FIRST ANGLE</p> <p></p>	<p>DATE 03-03-2023</p>	<p></p>

- Low cost locking solution at both ends
- Different colors available
- Patented IEX locking system
- Locking sleeve for C13 and C19 plugs
- VDE, UL approved

IEX PATENTED LOCKING SOCKET - POWER CORD SOLUTION



C14 - C13 Sleeve

H05VV-F3G1 mm²

Color	0,5M	1M	2M
Black	✓	✓	✓
Red	✓	✓	✓
Blue	✓	✓	✓

C14PLOCK - C13 Sleeve

H05VV-F3G1 mm²

Color	0,5M	1M	2M
Black	✓	✓	✓
Red	✓	✓	✓
Blue	✓	✓	✓

C20PLOCK - C19 Sleeve

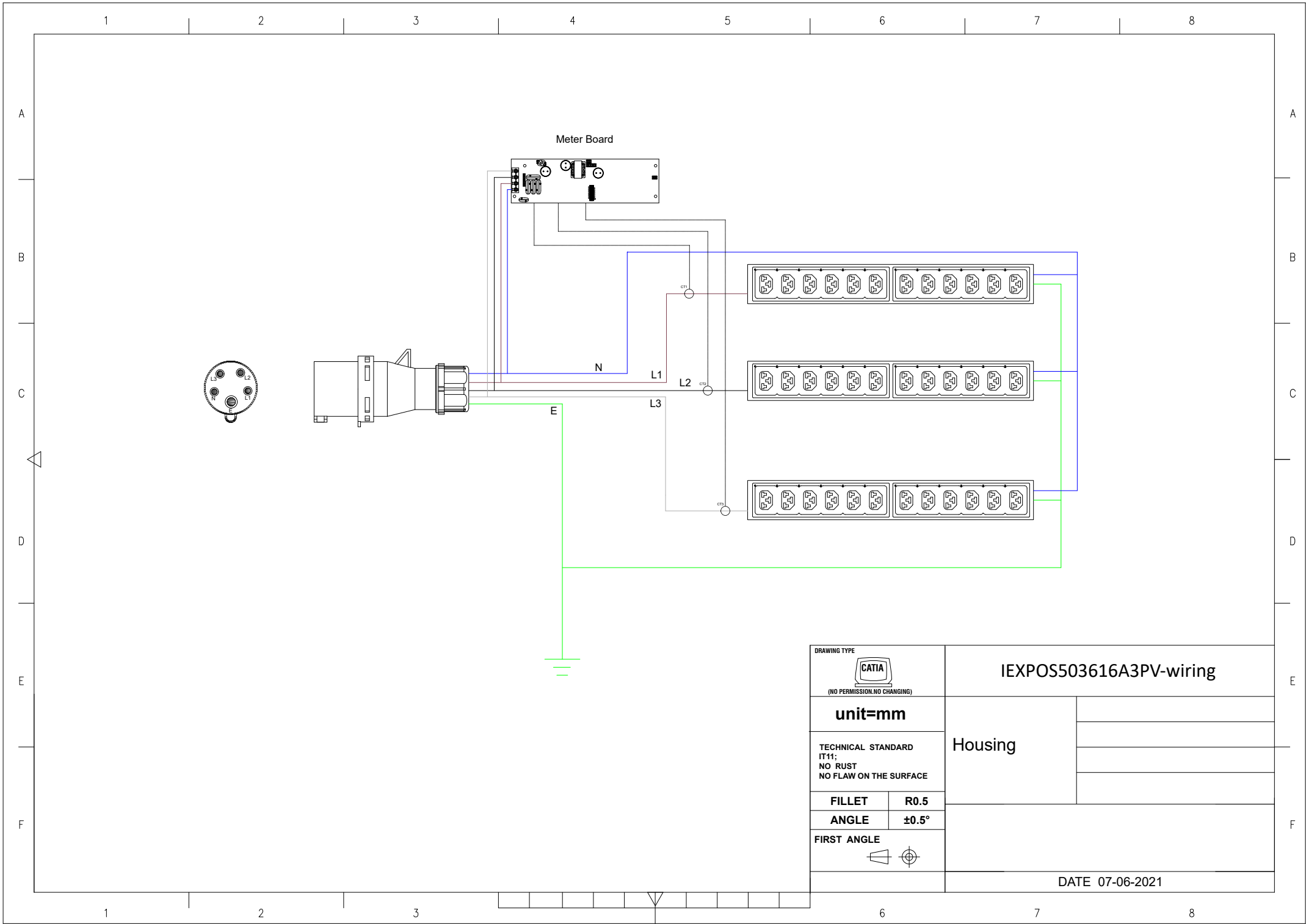
H05VV-F3G1,5 mm²


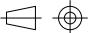
Color	1M	2M
Black	✓	✓
Red	✓	✓
Blue	✓	✓

C20PLOCK - C13 Sleeve

H05VV-F3G1 mm²

Color	1M	2M
Black	✓	✓
Red	✓	✓
Blue	✓	✓



DRAWING TYPE		IEXPOS503616A3PV-wiring	
 (NO PERMISSION, NO CHANGING)		Housing	
unit=mm			
TECHNICAL STANDARD IT11; NO RUST NO FLAW ON THE SURFACE			
FILLET	R0.5		
ANGLE	±0.5°		
FIRST ANGLE 		DATE 07-06-2021	

QTY	Part No.
1	PD090-3

Part No.
PP029-3

Part No.
PP081-5

Part No.
PP030-3

Part No.
PP070-4

QTY	Part No.
12	IEXLOCKB
12	IEXLOCKW
12	IEXLOCKG

QTY	Part No.
2	MT190

QTY	Part No.
2	MT124-1

QTY	Part No.
2	PL178

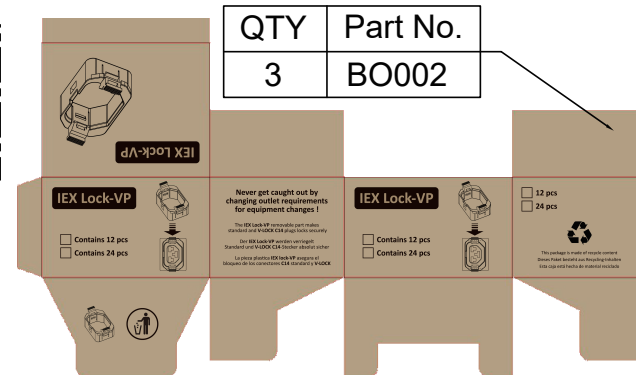
QTY	Part No.
2	MT124-1

QTY	Part No.
2	MT190-2

QTY	Part No.
6	MT124

QTY	Part No.
2	PL178

QTY	Part No.
2	MT190-3



QTY	Part No.
3	BO002

PK036
Section 23.5x9 cm Length 200 cm

Weight: 9kg(2 PDU)