

FEATURES

| | |
|--------------------------------|--|
| Technology | POS (Per Outlet Switching) |
| Energy Metering | Voltage(V), Current(A), Active Power(W), Apparent Power (VA), Reactive Power (var), PF, Frequency(Hz), kWh |
| Metering per Input Line | Yes (Branch Circuit and Total Current) Accuracy 1% |
| Metering per Output Receptacle | No |
| Remote Outlet Switching | Yes |
| Ethernet Port | 2 Gigabit Ethernet ports to access the PDU from 2 different networks |
| Networking Protocols | DHCP, IPv4 and IPv6, DNS, http / https, SSHv.2, SNMP v1 / v2c / v3, SNMP TRAPS / SETS / GETS, SMTP, Modbus , TCP, RADIUS, Syslog, TLS 1.3, SNTP, ARP, ICMP, ICMPv6, UDP, NDP |
| PDU Cascading | 16 PDUs |
| Power Share | Yes |
| Network Controller | Replaceable Hot Swapable controller with 4 button OLED display |
| Residual Current Monitoring | No |
| Rack Access Control | Compatible with DCIM solutions |
| USB Ports | 2 USB A ports WiFi networking, webcam, PDU configuration and mobile interface |
| Environmental Sensors | All in one Temperature and Humidity sensor with 2 digital inputs (for connect air flow, door sensor, water leak, smoke detector and Vibration sensor) plug and play bus allows to connect 8 EMD devices in one PDU |

INPUT

| | |
|---------------------|---------------------------------|
| Plug | IEC60309 3P+N+E 6h 16A 380-415V |
| Lead Length | 3 meter |
| Cable Type | H07RN-F5G2.5 mm ² |
| Max. Input Load | 16A |
| Rated Input Voltage | 380-415V three phase |
| Frequency | 50-60Hz |
| Power Capacity | 11kW |

OUTPUT

| | |
|----------------------|--|
| Rated Output Voltage | 190-250V Single phase |
| Output Types | 18 IEX (C13/C19) combo with LED (Max rate 16A) EN61984+UL498 certified |
| Overload Protection | None |

CHASSIS

| | |
|-------------------------------------|--------------------------------------|
| Dimensions (W x D x H) | 1050 x 60 x 72 mm |
| Color | RAL 9004 black powder coat |
| Mounting Options | 4 mounting options (see page 2) |
| Required Torque for Mounting Screws | ≥2.54N·m (25.9kgf·cm or 22.4 in·lbs) |

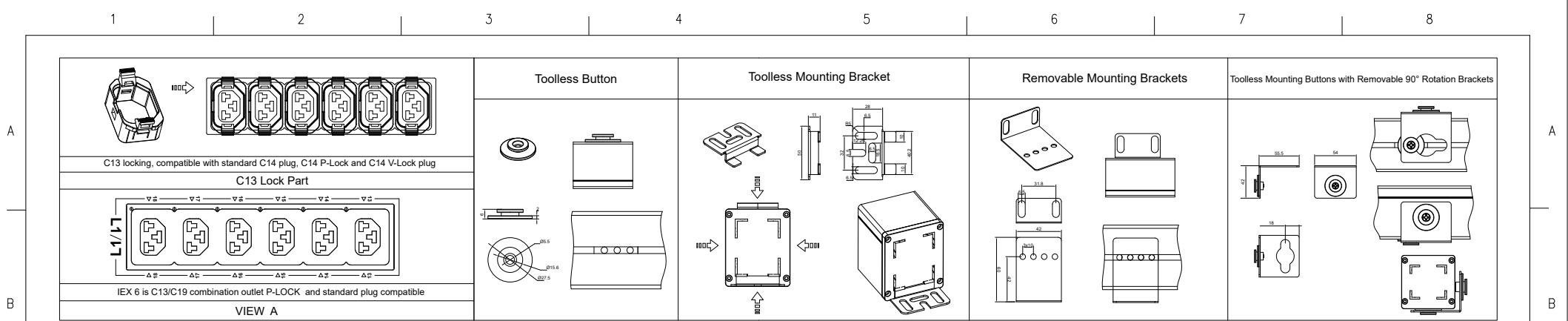
OPERATING ENVIRONMENT

| | |
|-------------------|-----------------------------|
| Temperature Range | 0° to 60° C (30° to 140° F) |
| Humidity | 0 - 95 % |
| Elevation | 0 - 4000 Meters |

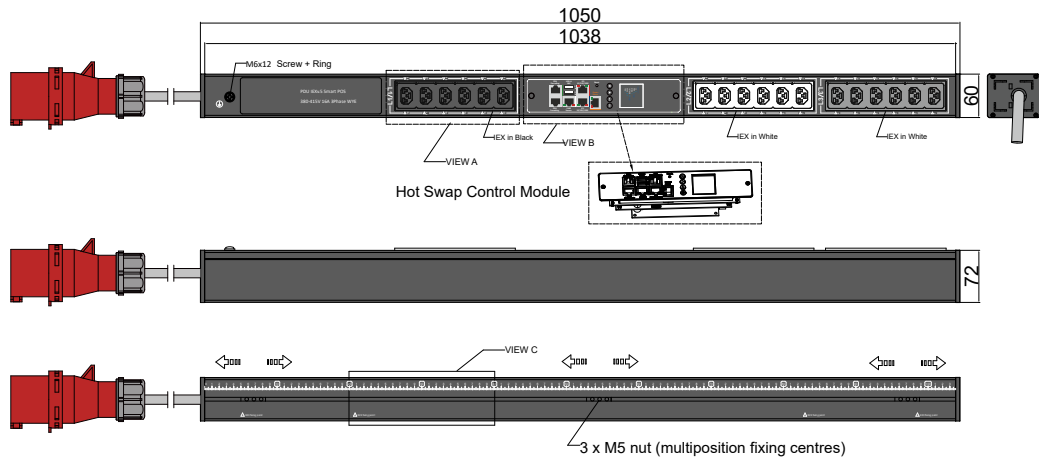
CONFORMANCE

IEC 62368-1 (Third Edition)

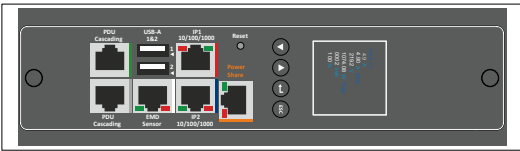




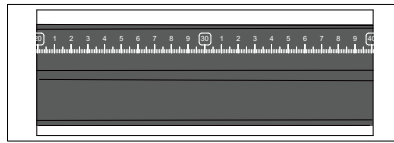
| Chassis Color | Code |
|---------------|----------------|
| Black | Standard color |
| White | W |
| Red | R |
| Blue | A |
| Green | G |
| Orange | O |
| Grey | GY |
| Yellow | Y |



VIEW B:




VIEW C:



Packing content:

IEX Lock-VP  X18 (black,white,grey)

| | | | | | | | | |
|--|---|--|------------------|-------------|------|---|---|----------------------|
| POS Series Inlet Power Monitoring Per Outlet Switching Environmental Monitoring | OUTPUT (6) IEX (C13/C19) combo with LED Black (Max rate 16A) (6) IEX (C13/C19) combo with LED White (Max rate 16A) (6) IEX (C13/C19) combo with LED Grey (Max rate 16A) | OPERATING TEMPERATURE 0° to 60°C | Revisions | | | unit=mm TECHNICAL STANDARD IT11; NO RUST NO FLAW ON THE SURFACE | Housing | Aluminium |
| | | | Rev | Description | Date | | | Black Powder Coating |
| INPUT 380-415VAC 16A 50HZ IEC60309 16A 3P+N+E Plug 3m H07RN-F5G2.5mm ² Power Lead | BRANCH CIRCUITS | MOUNTING ACCESSORIES (2) Toolless Button (2) Toolless Mounting Bracket (2) Removable Mounting Brackets (2) Toolless Mounting Buttons with Removable 90° Rotation Brackets | | | | FILLET R0.5 ANGLE ±0.5° FIRST ANGLE |  | RAL9004 |
| | | | | | | | | |

- Low cost locking solution at both ends
- Different colors available
- Patented IEX locking system
- Locking sleeve for C13 and C19 plugs
- VDE, UL approved

IEX PATENTED LOCKING SOCKET - POWER CORD SOLUTION



C14 - C13 Sleeve

H05VV-F3G1 mm²

| Color | 0,5M | 1M | 2M |
|-------|------|----|----|
| Black | ✓ | ✓ | ✓ |
| Red | ✓ | ✓ | ✓ |
| Blue | ✓ | ✓ | ✓ |

C14PLOCK - C13 Sleeve

H05VV-F3G1 mm²

| Color | 0,5M | 1M | 2M |
|-------|------|----|----|
| Black | ✓ | ✓ | ✓ |
| Red | ✓ | ✓ | ✓ |
| Blue | ✓ | ✓ | ✓ |

C20PLOCK - C19 Sleeve

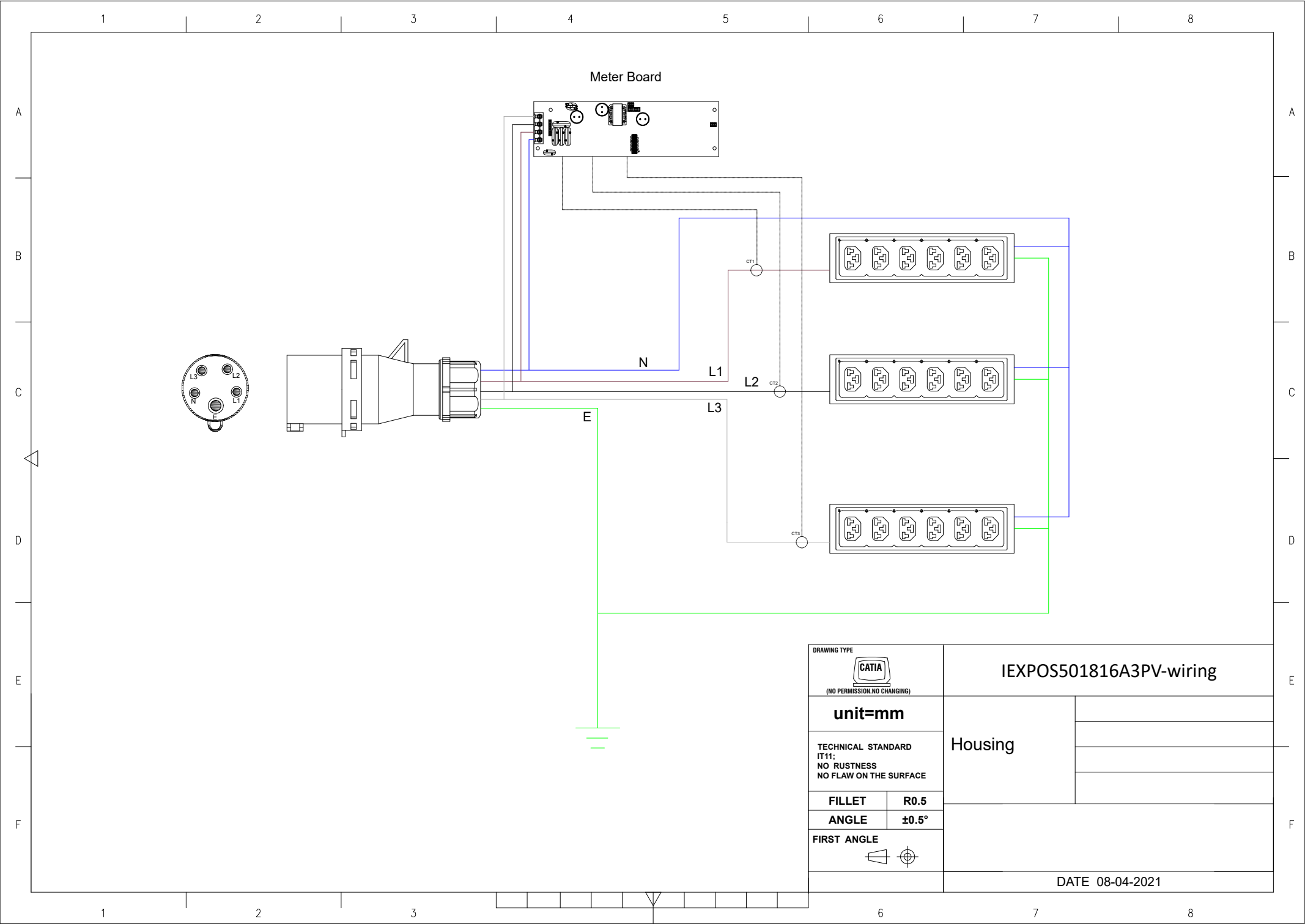
H05VV-F3G1,5 mm²


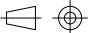
| Color | 1M | 2M |
|-------|----|----|
| Black | ✓ | ✓ |
| Red | ✓ | ✓ |
| Blue | ✓ | ✓ |

C20PLOCK - C13 Sleeve

H05VV-F3G1 mm²

| Color | 1M | 2M |
|-------|----|----|
| Black | ✓ | ✓ |
| Red | ✓ | ✓ |
| Blue | ✓ | ✓ |



| | |
|---|--------------|
| DRAWING TYPE | |
|  (NO PERMISSION, NO CHANGING) | |
| unit=mm | |
| TECHNICAL STANDARD IT11; NO RUSTNESS NO FLAW ON THE SURFACE | |
| FILLET | R0.5 |
| ANGLE | ±0.5° |
| FIRST ANGLE | |
|  | |

| | |
|--------------------------------|--|
| IEXPOS501816A3PV-wiring | |
| Housing | |
| | |
| | |
| DATE 08-04-2021 | |

| QTY | Part No. |
|-----|----------|
| 1 | PD090-3 |

Part No.
PP029-3

Part No.
PP081-3

Part No.
PP030-3

Part No.
PP070-2

| QTY | Part No. |
|-----|----------|
| 6 | IEXLOCKB |
| 6 | IEXLOCKW |
| 6 | IEXLOCKG |

| QTY | Part No. |
|-----|----------|
| 2 | MT190 |

| QTY | Part No. |
|-----|----------|
| 2 | MT124-1 |

| QTY | Part No. |
|-----|----------|
| 2 | PL178 |

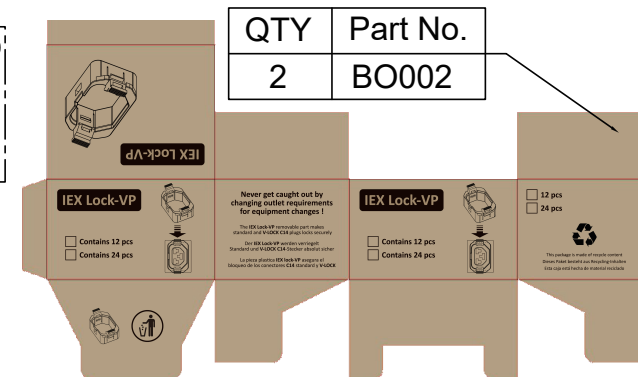
| QTY | Part No. |
|-----|----------|
| 2 | MT124-1 |

| QTY | Part No. |
|-----|----------|
| 2 | MT190-2 |

| QTY | Part No. |
|-----|----------|
| 6 | MT124 |

| QTY | Part No. |
|-----|----------|
| 2 | PL178 |

| QTY | Part No. |
|-----|----------|
| 2 | MT190-3 |



| QTY | Part No. |
|-----|----------|
| 2 | BO002 |

PK034
Section 23.5x9 cm Length 150 cm

Weight: 7kg(2 PDU)