

| FEATURES | |
|-------------------------------------|--|
| Technology | POMS (Per Outlet Metering & Switching) |
| Energy Metering | Voltage(V), Current(A), Active Power(W), Apparent Power (VA), Reactive Power (var), PF, Frequency(Hz), kWh |
| Metering per Input Line | Yes (Branch Circuit and Total Current) Accuracy 1% |
| Metering per Output Receptacle | Yes |
| Remote Outlet Switching | Yes |
| Ethernet Port | 2 Gigabit Ethernet ports to acces the PDU from 2 different networks |
| Networking Protocols | DHCP, IPv4 and IPv6, DNS, http / https, SSHv.2, SNMP v1 / v2c / v3, SNMP TRAPS / SETS / GETS, SMTP, Modbus , TCP, RADIUS, Syslog, TLS 1.3, SNTP, ARP, ICMP, ICMPv6, UDP, NDP |
| PDU Cascading | 16 PDUs |
| Power Share | Yes |
| Network Controller | Replaceable Hot Swapable controller with 4 button OLED display |
| Residual Current Monitoring | No |
| Rack Acces Control | Compatible with DCIM solutions |
| USB Ports | 2 USB A ports WiFi networking,webcam,PDU configuration and mobile interface |
| Environmental Sensors | All in one Temperature and Humidity sensor with 2 digital inputs (for connect air flow, door sensor, water leak, smoke detector and Vibration sensor) plug and play bus allows to connect 8 EMD devices in one PDU |
| INPUT | |
| Plug | IEC60309 3P+N+E 6h 32A 380-415V |
| Lead Length | 3 meter |
| Cable Type | H07RN-F5G4.0 mm ² |
| Max. Input Load | 32A |
| Rated Input Voltage | 380-415V three phase |
| Frequency | 50-60Hz |
| Power Capacity | 22.1kW |
| OUTPUT | |
| Rated Output Voltage | 190-250V Single phase |
| Output Types | 24 IEX (C13/C19) combo with LED (Max rate 16A) EN61984+UL498 certified |
| Overload Protection | (6) 1 Pole Carling 16A J Series J51-BO-24-616-M1D-D3 |
| CHASSIS | |
| Dimensions (W x D x H) | 1832 x 60 x 72 mm |
| Color | RAL 9004 black powder coat |
| Mounting Options | 4 mounting options (see page 2) |
| Required Torque for Mounting Screws | ≥2.54N·m (25.9kgf·cm or 22.4 in·lbs) |
| OPERATING ENVIRONMENT | |
| Temperature Range | 0° to 60° C (30° to 140° F) |
| Humidity | 0 - 95 % |
| Elevation | 0 - 4000 Meters |
| CONFORMANCE | |
| IEC 62368-1 (Third Edition) | |
| | |

- Low cost locking solution at both ends
- Different colors available
- Patented IEX locking system
- Locking sleeve for C13 and C19 plugs
- VDE, UL approved

IEX PATENTED LOCKING SOCKET - POWER CORD SOLUTION



C14 - C13 Sleeve

H05VV-F3G1 mm²

| Color | 0,5M | 1M | 2M |
|-------|------|----|----|
| Black | ✓ | ✓ | ✓ |
| Red | ✓ | ✓ | ✓ |
| Blue | ✓ | ✓ | ✓ |

C14PLOCK - C13 Sleeve

H05VV-F3G1 mm²

| Color | 0,5M | 1M | 2M |
|-------|------|----|----|
| Black | ✓ | ✓ | ✓ |
| Red | ✓ | ✓ | ✓ |
| Blue | ✓ | ✓ | ✓ |

C20PLOCK - C19 Sleeve

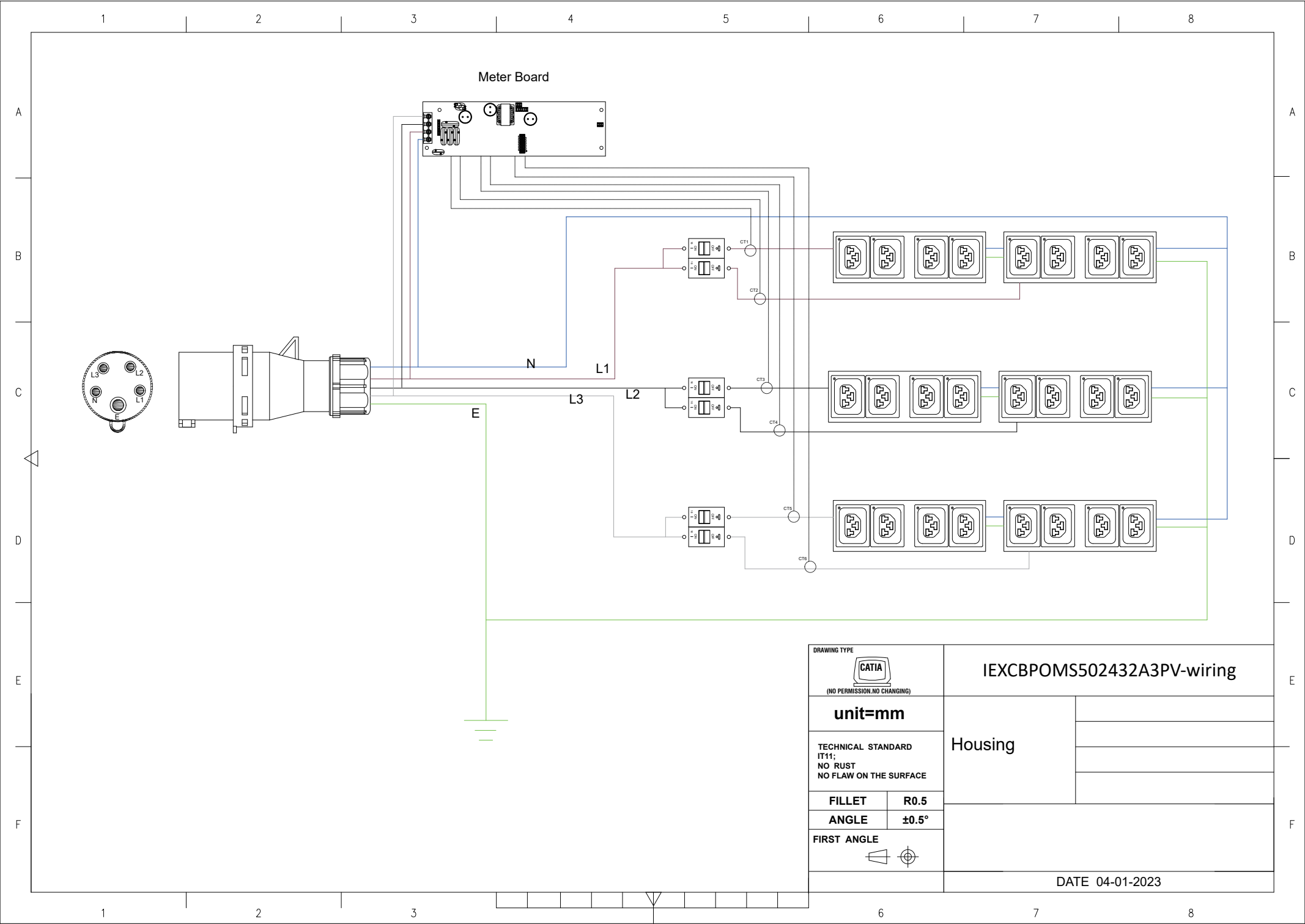
H05VV-F3G1,5 mm²


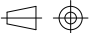
| Color | 1M | 2M |
|-------|----|----|
| Black | ✓ | ✓ |
| Red | ✓ | ✓ |
| Blue | ✓ | ✓ |

C20PLOCK - C13 Sleeve

H05VV-F3G1 mm²

| Color | 1M | 2M |
|-------|----|----|
| Black | ✓ | ✓ |
| Red | ✓ | ✓ |
| Blue | ✓ | ✓ |



| | | | |
|---|-------|----------------------------|--|
| DRAWING TYPE | | IEXCBPOMS502432A3PV-wiring | |
|  (NO PERMISSION, NO CHANGING) | | Housing | |
| unit=mm | | | |
| TECHNICAL STANDARD IT11; NO RUST NO FLAW ON THE SURFACE | | DATE 04-01-2023 | |
| FILLET | R0.5 | | |
| ANGLE | ±0.5° | | |
| FIRST ANGLE | | | |
|  | | | |

| QTY | Part No. |
|-----|----------|
| 1 | PD090-3 |

Part No.
PP029-3

Part No.
PP081-6

Part No.
PP030-4

Part No.
PP070-5

| QTY | Part No. |
|-----|----------|
| 8 | IEXLOCKB |
| 8 | IEXLOCKW |
| 8 | IEXLOCKG |

| QTY | Part No. |
|-----|----------|
| 2 | MT190 |

| QTY | Part No. |
|-----|----------|
| 2 | MT124-1 |

| QTY | Part No. |
|-----|----------|
| 2 | PL178 |

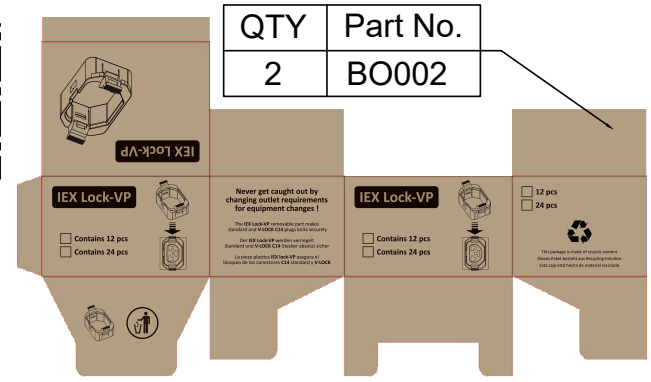
| QTY | Part No. |
|-----|----------|
| 2 | MT124-1 |

| QTY | Part No. |
|-----|----------|
| 2 | MT190-2 |

| QTY | Part No. |
|-----|----------|
| 6 | MT124 |

| QTY | Part No. |
|-----|----------|
| 2 | PL178 |

| QTY | Part No. |
|-----|----------|
| 2 | MT190-3 |



PK037
Section 23.5x9 cm Length 220 cm

Weight: 10kg(2 PDU)