

FEATURES

| | |
|--------------------------------|-------|
| Technology | Basic |
| Energy Metering | No |
| Metering per Input Line | No |
| Metering per Output Receptacle | No |
| Remote Outlet Switching | No |
| Ethernet Port | No |
| Networking Protocols | No |
| PDU Cascading | No |
| Power Share | No |
| Display | No |
| Residual Current Monitoring | No |
| USB Ports | No |
| Environmental Sensors | No |

INPUT

| | |
|---------------------|---------------------------------|
| Plug | IEC60309 3P+N+E 6h 16A 380-415V |
| Lead Length | 3 meter |
| Cable Type | H07RN-F5G2.5 mm ² |
| Max. Input Load | 16A |
| Rated Input Voltage | 380-415V three phase |
| Frequency | 50-60Hz |
| Power Capacity | 11kW |

OUTPUT

| | |
|----------------------|---|
| Rated Output Voltage | 190-250V Single phase |
| Output Types | 24 IEX (C13/C19) combo (Max rate 16A) EN61984+UL498 certified |
| Overload Protection | None |

CHASSIS

| | |
|-------------------------------------|--------------------------------------|
| Dimensions (W x D x H) | 882 x 55 x 55.4 mm |
| Color | RAL 9004 black powder coat |
| Mounting Options | 4 mounting options (see page 2) |
| Required Torque for Mounting Screws | ≥2.54N·m (25.9kgf·cm or 22.4 in·lbs) |

OPERATING ENVIRONMENT

| | |
|-------------------|-----------------------------|
| Temperature Range | 0° to 60° C (30° to 140° F) |
| Humidity | 0 - 95 % |
| Elevation | 0 - 4000 Meters |

CONFORMANCE

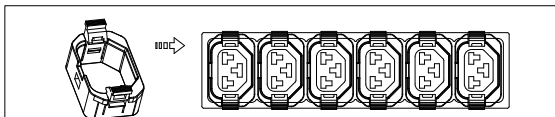
IEC 62368-1 (Third Edition)



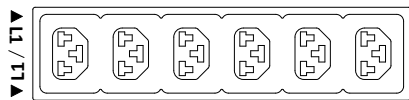
1 2 3 4 5 6 7 8

A

A



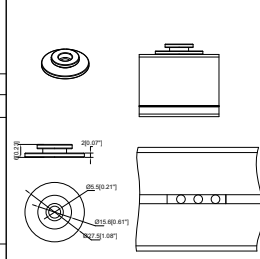
C13 locking, compatible with standard C14 plug, C14 V-Lock plug
C13 Lock Part



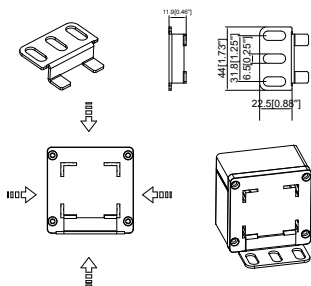
IEX 6 is C13/C19 combination outlet P-LOCK and standard plug compatible

VIEW A

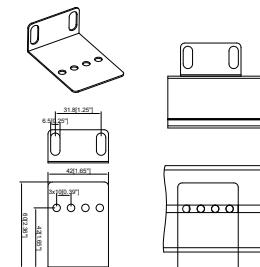
Toolless Button



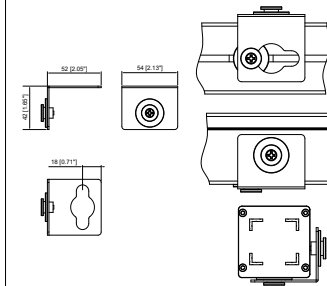
Toolless Mounting Bracket



Removable Mounting Brackets



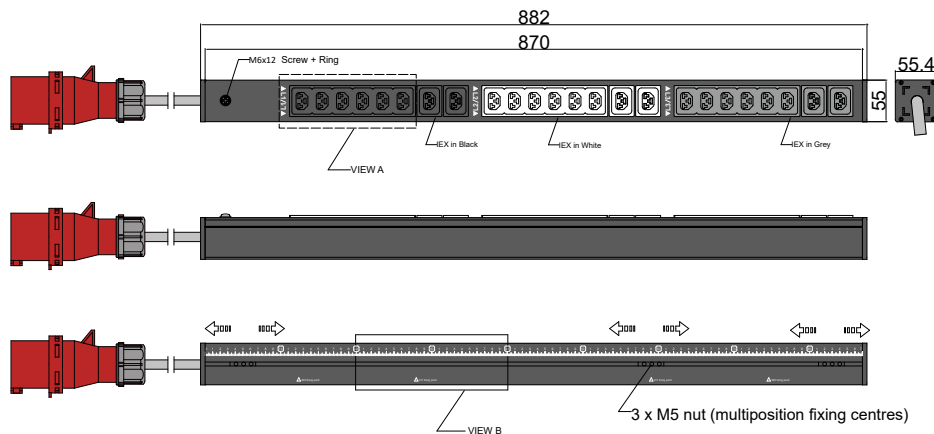
Toolless Mounting Buttons with Removable 90° Rotation Brackets



B

B

| Chassis Color | Code |
|---------------|----------------|
| Black | Standard color |
| White | W |
| Red | R |
| Blue | A |
| Green | G |
| Orange | O |
| Grey | GY |
| Yellow | Y |

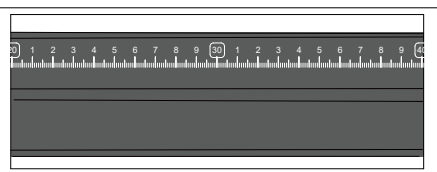


Packing content:

IEX Lock-VP X24 (black,white,grey)



VIEW B:



D

D

E

E

| | | | | | |
|---|---|---|-----------|-------------|------|
| Basic Series | OUTPUT (8) IEX (C13/C19) combo Black (Max rate 16A) (8) IEX (C13/C19) combo White (Max rate 16A) (8) IEX (C13/C19) combo Grey (Max rate 16A) | OPERATING TEMPERATURE 0° to 60°C | Revisions | | |
| | | | Rev | Description | Date |
| INPUT 380-415VAC 16A 50HZ IEC60309 16A 3P+N+E Plug 3m H07RN-F5G2.5mm² Power Lead | BRANCH CIRCUITS | MOUNTING ACCESSORIES (2) Toolless Button (2) Toolless Mounting Bracket (2) Removable Mounting Brackets (2) Toolless Mounting Buttons with Removable 90° Rotation Brackets | | | |

| | | |
|--|---------------|----------------------|
| DRAWING TYPE (NO PERMISSION, NO CHANGING) | IEX452416A3PV | |
| unit=mm | Housing | Aluminium |
| TECHNICAL STANDARD IT11; NO RUST NO FLAW ON THE SURFACE | | Black Powder Coating |
| FILLET R0.5 ANGLE ±0.5° FIRST ANGLE | | RAL9004 |
| | | |
| DATE 04-04-2023 | | |

1 2 3 4 5 6 7 8

- Low cost locking solution at both ends
- Different colors available
- Patented IEX locking system
- Locking sleeve for C13 and C19 plugs
- VDE, UL approved

IEX PATENTED LOCKING SOCKET - POWER CORD SOLUTION



C14 - C13 Sleeve
H05VV-F3G1 mm²

| Color | 0,5M | 1M | 2M |
|-------|------|----|----|
| Black | ✓ | ✓ | ✓ |
| Red | ✓ | ✓ | ✓ |
| Blue | ✓ | ✓ | ✓ |

C14PLOCK - C13 Sleeve
H05VV-F3G1 mm²

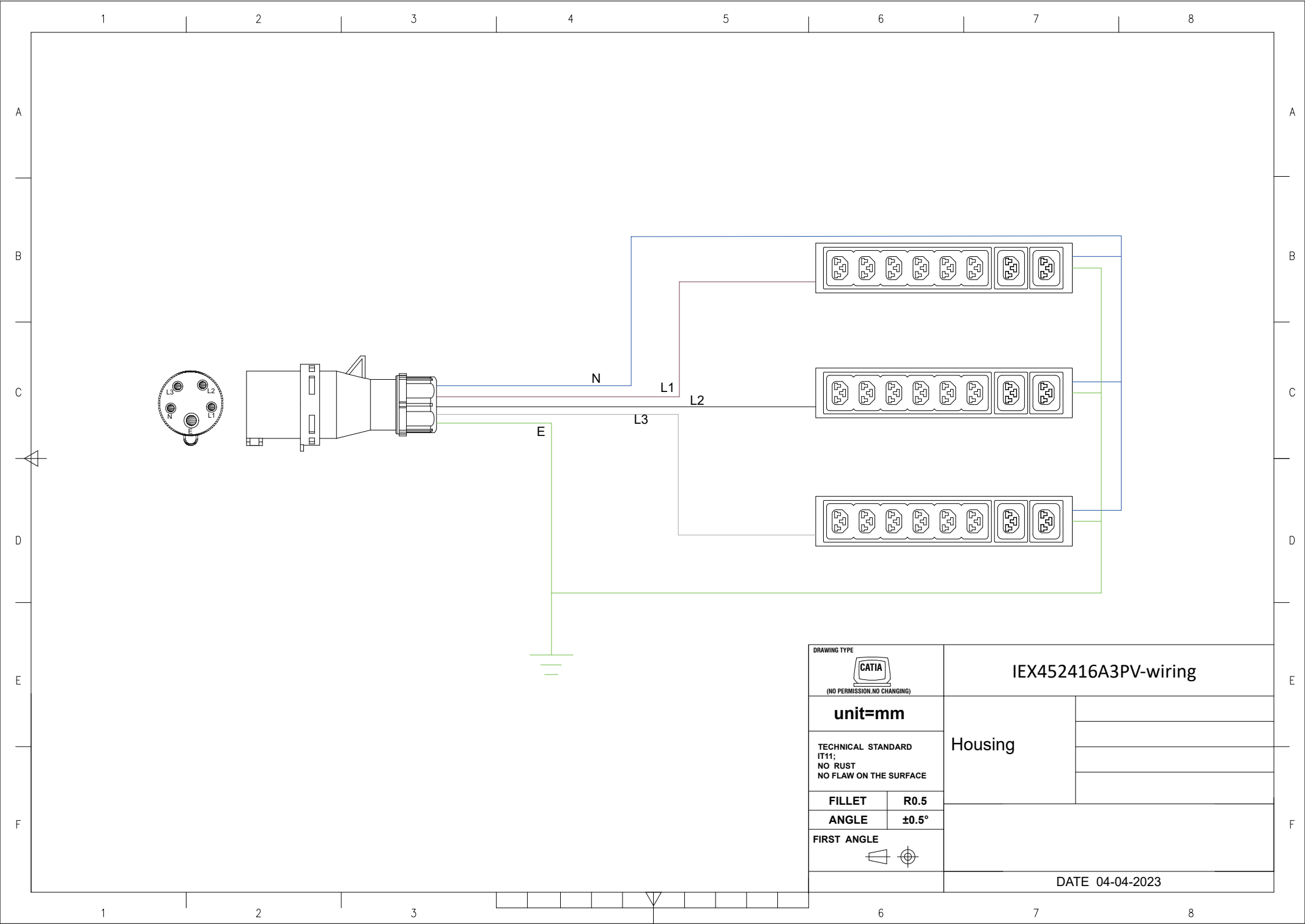
| Color | 0,5M | 1M | 2M |
|-------|------|----|----|
| Black | ✓ | ✓ | ✓ |
| Red | ✓ | ✓ | ✓ |
| Blue | ✓ | ✓ | ✓ |


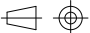
C20PLOCK - C19 Sleeve
H05VV-F3G1,5 mm²

| Color | 1M | 2M |
|-------|----|----|
| Black | ✓ | ✓ |
| Red | ✓ | ✓ |
| Blue | ✓ | ✓ |

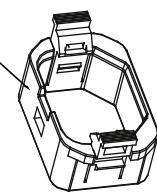
C20PLOCK - C13 Sleeve
H05VV-F3G1 mm²

| Color | 1M | 2M |
|-------|----|----|
| Black | ✓ | ✓ |
| Red | ✓ | ✓ |
| Blue | ✓ | ✓ |



| | | | |
|---|-------|----------------------|--|
| DRAWING TYPE | | IEX452416A3PV-wiring | |
|  (NO PERMISSION, NO CHANGING) | | Housing | |
| unit=mm | | | |
| TECHNICAL STANDARD IT11; NO RUST NO FLAW ON THE SURFACE | | | |
| FILLET | R0.5 | | |
| ANGLE | ±0.5° | | |
| FIRST ANGLE | | DATE 04-04-2023 | |
|  | | | |

| QTY | Part No. |
|-----|----------|
| 8 | IEXLOCKB |
| 8 | IEXLOCKW |
| 8 | IEXLOCKG |

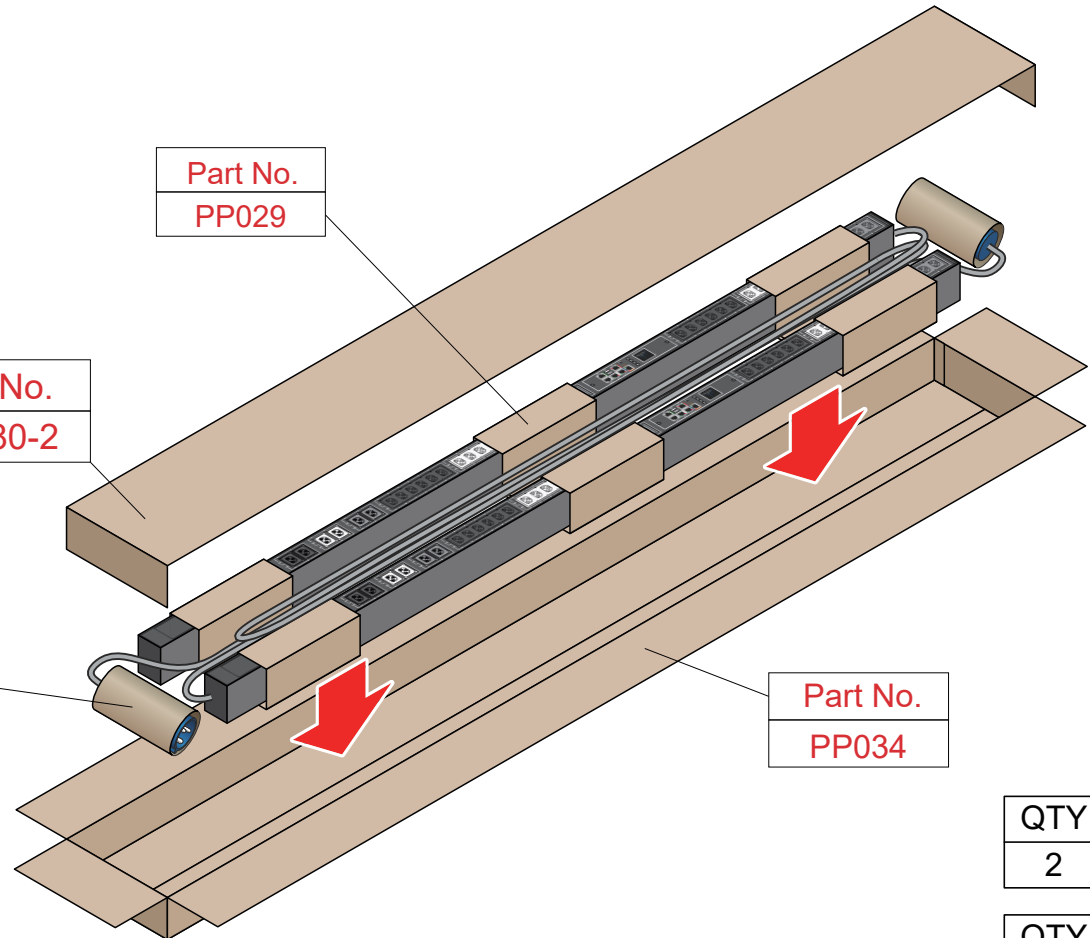


| | |
|----------|-------|
| Part No. | PP029 |
|----------|-------|

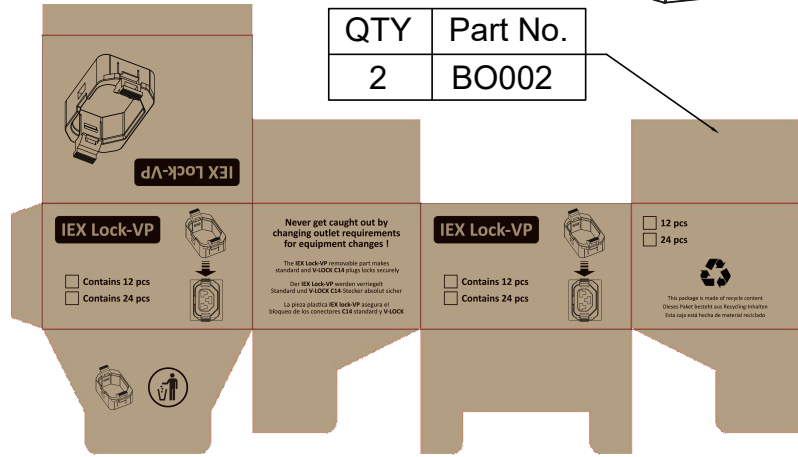
| | |
|----------|---------|
| Part No. | PP080-2 |
|----------|---------|

| | |
|----------|---------|
| Part No. | PP030-3 |
|----------|---------|

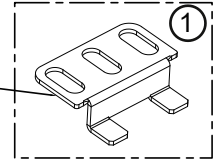
| | |
|----------|-------|
| Part No. | PP034 |
|----------|-------|



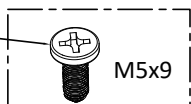
| QTY | Part No. |
|-----|----------|
| 2 | BO002 |



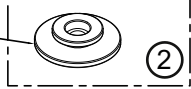
| QTY | Part No. |
|-----|----------|
| 2 | MT190-1 |



| QTY | Part No. |
|-----|----------|
| 2 | MT124-1 |

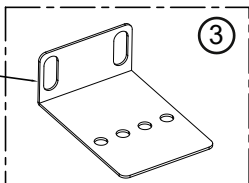


| QTY | Part No. |
|-----|----------|
| 2 | PL178 |



| QTY | Part No. |
|-----|----------|
| 2 | MT124-1 |

| QTY | Part No. |
|-----|----------|
| 2 | MT190-2 |

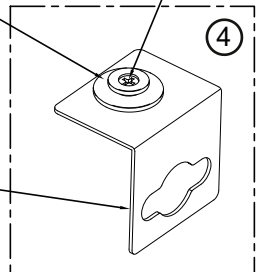


| QTY | Part No. |
|-----|----------|
| 6 | MT124 |



| QTY | Part No. |
|-----|----------|
| 2 | PL178 |

| QTY | Part No. |
|-----|----------|
| 2 | MT190-3 |



PK021
Section 22.5x7.2 cm Length 120 cm

Weight: 6kg(2 PDU)